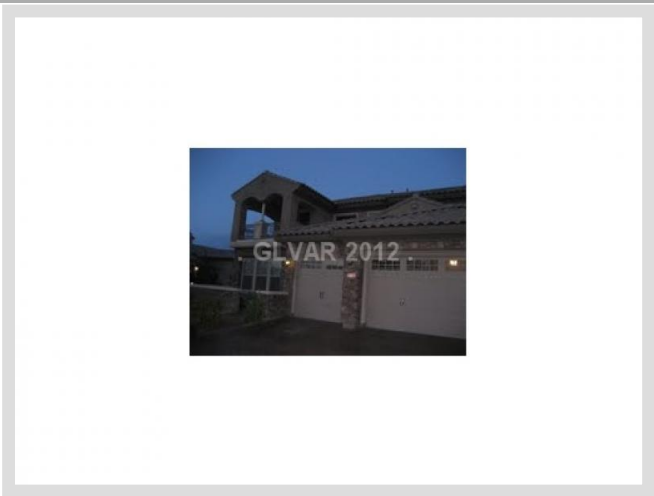




**2732 MOLIERE CT** **MLS# 1232120**

<b>SOLD</b>
<b>\$318,000</b>
Sold on 09-17-2012
<b>Bedrooms 4</b>
<b>Bathrooms 5</b>
Full Baths 4
3/4 Baths 0
1/2 Baths 1
<b>Stories 2</b>
<b>Living Area 3,369 sq. ft.</b>
<b>Lot Size 9,583 sq. ft.</b>
<b>Garages 3</b>
<b>Year Built 2006</b>
<b>List Date 03-07-2012</b>



**DESCRIPTION**

This 3,369 square foot single family home features 4 bedrooms, 5 bathrooms and is situated on a 9,583 square foot (0.22 acre) lot. It is located in the community of Anthem in Henderson on 2732 Moliere Ct. The MLS number is 1232120 and the parcel number is 190-19-810-045. This listing became available on 03-07-2012 and was sold on 09-17-2012 for \$318,000. The full public address for this listing is 2732 Moliere Ct, Henderson, Nevada 89044.

**THE DETAILS**

<b>Interior</b>	<b>Exterior</b>
<b>Flooring</b> Carpet, Tile	<b>Landscaping</b> Desert Landscaping
<b>Appliances</b> Dishwasher, Disposal	<b>Pool No</b>
<b>Fireplaces 1</b> Location: Family Room	<b>Spa No</b>
<b>Interior Description</b> Blinds	<b>House Faces West</b>
<b>Kitchen Description</b> Breakfast Bar/Counter, Granite Countertops, Island	<b>Roof Description</b> Tile
<b>Master Bedroom Description</b> Ceiling Fan, Master Bedroom Walk-In Closet	<b>Utility Information</b> Underground Utilities

## THE NEIGHBORHOOD

### Community

#### Community Name

Anthem

#### Gated Yes

#### Guard Gated Yes

#### Features & Amenities

Basketball Courts, CCRs, Clubhouse, Guard Gated, Community Pool, Recreation Room, Management, Recreation Facilities, Ground Maintenance

### Schools

#### Elementary K-2

Wallin Shirley

#### Elementary 3-5

Wallin Shirley

#### Middle School

Webb Del E

#### High School

Liberty

### Nearby

## THE NUMBERS

#### Current List Price

\$318,000

#### Previous List Price

\$200,000 on 03-07-2012

#### Original List Price

\$200,000 on 03-07-2012

#### Price/Sq. Ft.

\$94.39

#### Annual Taxes

\$4,210

#### Short Sale Yes

#### Pre-Foreclosure No

#### Bank Owned No

#### HOA Fees Yes

Master Plan Fee \$241/month

#### SID/LID Fees Yes

SID/LID Balance \$9,000

SID/LID Annual Fee \$1,000



Listing courtesy of Brian Goodman at Home Reach. The data relating to real estate for sale on this web site comes in part from the INTERNET DATA EXCHANGE Program of the Greater Las Vegas Association of REALTORS® MLS. Real estate listings held by brokerage firms other than this site owner are marked with the IDX logo. GLVAR deems information reliable but not guaranteed. Copyright 2019 of the Greater Las Vegas Association of REALTORS® MLS. All rights reserved.

For more photos or information on 2732 Moliere Ct, please visit:

<https://vegasdata.com/home-search/details/2732-Moliere-Ct-Henderson-Nevada-89044/mls-1232120/>