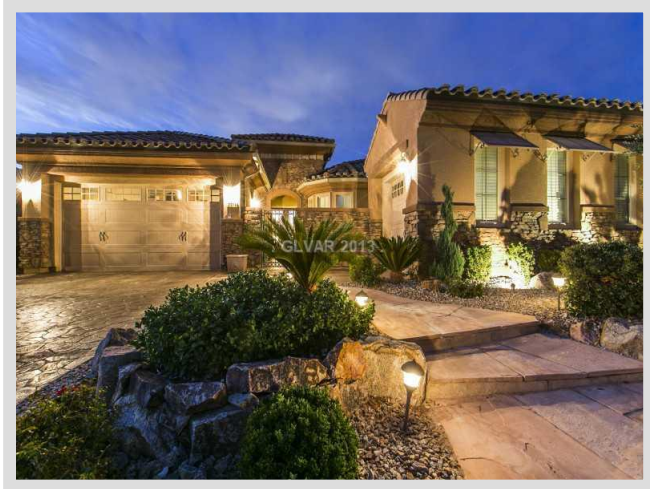




2316 PANISSE AVENUE **MLS# 1374945**

SOLD
\$525,000
Sold on 09-25-2013
Bedrooms 3
Bathrooms 3
Full Baths 3
3/4 Baths 0
1/2 Baths 0
Stories 1
Living Area 2,826 sq. ft.
Lot Size 9,148 sq. ft.
Garages 3
Year Built 2006
List Date 08-19-2013



DESCRIPTION

This 2,826 square foot single family home features 3 bedrooms, 3 bathrooms and is situated on a 9,148 square foot (0.21 acre) lot. It is located in the community of Anthem in Henderson on 2316 Panisse Avenue. The MLS number is 1374945 and the parcel number is 190-19-810-104. This listing became available on 08-19-2013 and was sold on 09-25-2013 for \$525,000. The full public address for this listing is 2316 Panisse Avenue, Henderson, Nevada 89044.

THE DETAILS

Interior	Exterior
Flooring	Landscaping
Carpet, Carpeting Throughout, Ceramic	Shrubs
Appliances	Pool No
Refrigerator, Dishwasher, Disposal, Central Vacuum, Microwave, Wine Refrigerator	Spa No
Fireplaces 1	House Faces North
Location: Family Room	Views: None
Interior Description	Roof Description
Alarm System-Rented, Blinds, Ceiling Fan(s), Drapes, Shutters	Tile
Kitchen Description	Utility Information
N/A	Cable TV Wired
Master Bedroom Description	
N/A	

THE NEIGHBORHOOD

Community

Community Name

Anthem

Gated Yes

Guard Gated Yes

Features & Amenities

Clubhouse, COMMUNITY Pool, COMMUNITY Spa, Exercise Room, Gated, Guard Gated, Tennis, Management, Security(Couldinclude Gated/Guard Gated/Roving)

Schools

Elementary K-2

Wallin Shirley

Elementary 3-5

Wallin Shirley

Middle School

Webb Del E

High School

Coronado High

Nearby

Hospital

St. Rose Dominican Hospital - Siena Campus

9 miles - 15 minutes

Lake Mead

23 miles - 34 minutes

Las Vegas Strip

18.4 miles - 26 minutes

McCarran Airport

15.6 miles - 25 minutes

Mount Charleston

40 miles - 46 minutes

Red Rock

34.1 miles - 45 minutes

THE NUMBERS

Current List Price

\$525,000

Previous List Price

N/A

Original List Price

\$529,900 on 08-19-2013

Price/Sq. Ft.

\$185.77

Annual Taxes

\$3,872

Short Sale No

Pre-Foreclosure No

Bank Owned No

HOA Fees Yes

HOA #1 Fee \$723/quarter

SID/LID Fees Yes

SID/LID Balance \$12,741

SID/LID Annual Fee \$765



Listing courtesy of Ivan Sher at Bhhs Nevada Properties. The data relating to real estate for sale on this web site comes in part from the INTERNET DATA EXCHANGE Program of the Greater Las Vegas Association of REALTORS® MLS. Real estate listings held by brokerage firms other than this site owner are marked with the IDX logo. GLVAR deems information reliable but not guaranteed. Copyright 2019 of the Greater Las Vegas Association of REALTORS® MLS. All rights reserved.

For more photos or information on 2316 Panisse Avenue, please visit:

<https://vegasdata.com/home-search/details/2316-Panisse-Avenue-Henderson-Nevada-89044/mls-1374945/>