



9240 WORSLEY PARK PL #0 **MLS# 1286460**

LEASED
\$1,550

Leased on 12-26-2012

Bedrooms 3

Bathrooms 3
Full Baths 2
3/4 Baths 0
1/2 Baths 1

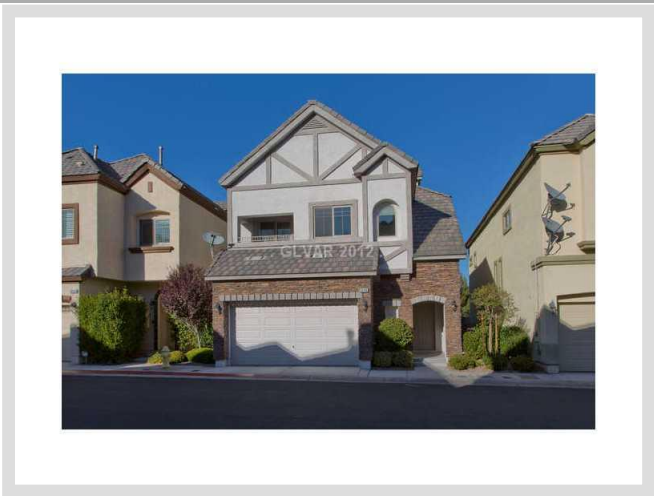
Stories 2

Living Area 2,674 sq. ft.

Garages 2

Year Built 2005

List Date 09-20-2012



DESCRIPTION

This 2,674 square foot single family home features 3 bedrooms and 3 bathrooms. It is located in Las Vegas on 9240 Worsley Park Pl #0. The MLS number is 1286460 and the parcel number is 138-31-615-012. This listing became available on 09-20-2012 and was leased on 12-26-2012 for \$1,550. The full public address for this listing is 9240 Worsley Park Pl #0, Las Vegas, Nevada 89145.

THE DETAILS

Interior	Exterior
Flooring Tile	Landscaping N/A
Appliances Refrigerator, Dishwasher, Disposal, Washer, Dryer, Microwave	Pool No
Fireplaces 2	Spa No
Pets Allowed Yes	Roof Description Pitched, Tile
Interior Description Blinds, Skylight(s), Window Coverings Throughout	
Kitchen Description Island, Breakfast Bar/Counter, Pantry	
Master Bedroom Description Master Bedroom Walk-In Closet, Master Bedroom Separate From Others, Loft	

THE NEIGHBORHOOD

Community

Community Name

N/A

Gated Yes

Features & Amenities

Gated Community, Community Pool, Community Spa

Schools

Elementary K-2

Bonner John W

Elementary 3-5

Bonner John W

Middle School

Rogich Sig

High School

Palo Verde

Nearby

THE NUMBERS

Current List Price

\$1,550

Previous List Price

\$1,895 on 09-20-2012

Original List Price

\$2,350 on 09-20-2012

Price/Sq. Ft.

\$0.58

Short Sale No

Pre-Foreclosure No

Bank Owned No

Security Deposit \$2,350

Cleaning Deposit \$150

Admin. Deposit \$50

Key Deposit \$150

Pet Deposit \$250

Other Deposit \$0



Listing courtesy of Florence Shapiro at Bhhs Nevada Properties. The data relating to real estate for sale on this web site comes in part from the INTERNET DATA EXCHANGE Program of the Greater Las Vegas Association of REALTORS® MLS. Real estate listings held by brokerage firms other than this site owner are marked with the IDX logo. GLVAR deems information reliable but not guaranteed. *Copyright 2019 of the Greater Las Vegas Association of REALTORS® MLS. All rights reserved.* For more photos or information on 9240 Worsley Park PI #0, please visit: <https://vegadata.com/home-search/details/9240-Worsley-Park-PI-Unit-0-Las-Vegas-Nevada-89145/mls-1286460/>