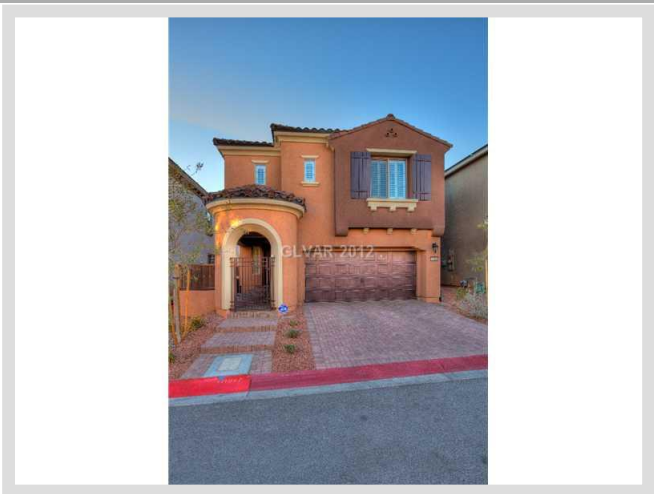




**11241 PISMO DUNES CT #0** **MLS# 1310032**

<b>LEASED</b>
<b>\$1,650</b>
Leased on 01-25-2013
<b>Bedrooms 3</b>
<b>Bathrooms 3</b>
Full Baths 2
3/4 Baths 0
1/2 Baths 1
<b>Stories 2</b>
<b>Living Area 1,749 sq. ft.</b>
<b>Garages 2</b>
<b>Year Built 2010</b>
<b>List Date 12-28-2012</b>



**DESCRIPTION**

This 1,749 square foot single family home features 3 bedrooms and 3 bathrooms. It is located in the community of Summerlin in Las Vegas on 11241 Pismo Dunes Ct #0. The MLS number is 1310032 and the parcel number is 164-02-615-049. This listing became available on 12-28-2012 and was leased on 01-25-2013 for \$1,650. The full public address for this listing is 11241 Pismo Dunes Ct #0, Las Vegas, Nevada 89135.

**THE DETAILS**

<b>Interior</b>	<b>Exterior</b>
<b>Flooring</b>	<b>Landscaping</b>
Tile, Hardwood	Drip Irrigation/Bubblers, Desert Landscaping
<b>Appliances</b>	<b>Pool No</b>
Refrigerator, Dishwasher, Disposal, Washer, Dryer, Microwave, Water Conditioner-Owned	<b>Spa No</b>
<b>Fireplaces 1</b>	<b>Roof Description</b>
<b>Pets Allowed No</b>	Tile
<b>Interior Description</b>	
Ceiling Fan(s), Alarm System-Owned, Shutters	
<b>Kitchen Description</b>	
Breakfast Bar/Counter, Granite Countertops, Island, Tile Flooring, Lighting Recessed	
<b>Master Bedroom Description</b>	
Ceiling Fan, Master Bedroom Separate From Others, Master Bedroom Walk-In Closet	

## THE NEIGHBORHOOD

### Community

#### Community Name

Summerlin

#### Gated No

#### Features & Amenities

Community Spa, Community Pool, Playground/Park

### Schools

#### Elementary K-2

Goolsby Judy & John

#### Elementary 3-5

Goolsby Judy & John

#### Middle School

Rogich Sig

#### High School

Palo Verde

### Nearby

## THE NUMBERS

#### Current List Price

\$1,650

#### Previous List Price

N/A

#### Original List Price

\$1,650 on 12-28-2012

#### Price/Sq. Ft.

\$0.94

#### Short Sale No

#### Pre-Foreclosure No

#### Bank Owned No

#### Security Deposit \$1,650

#### Cleaning Deposit \$400

#### Admin. Deposit \$75

#### Key Deposit \$0

#### Pet Deposit \$0

#### Other Deposit \$0



Listing courtesy of Jackie Akester at Real Estate By Design. The data relating to real estate for sale on this web site comes in part from the INTERNET DATA EXCHANGE Program of the Greater Las Vegas Association of REALTORS® MLS. Real estate listings held by brokerage firms other than this site owner are marked with the IDX logo. GLVAR deems information reliable but not guaranteed. Copyright 2019 of the Greater Las Vegas Association of REALTORS® MLS. All rights reserved.

For more photos or information on 11241 Pismo Dunes Ct #0, please visit:

<https://vegashome.com/home-search/details/11241-Pismo-Dunes-Ct-Unit-0-Las-Vegas-Nevada-89135/mls-1310032/>