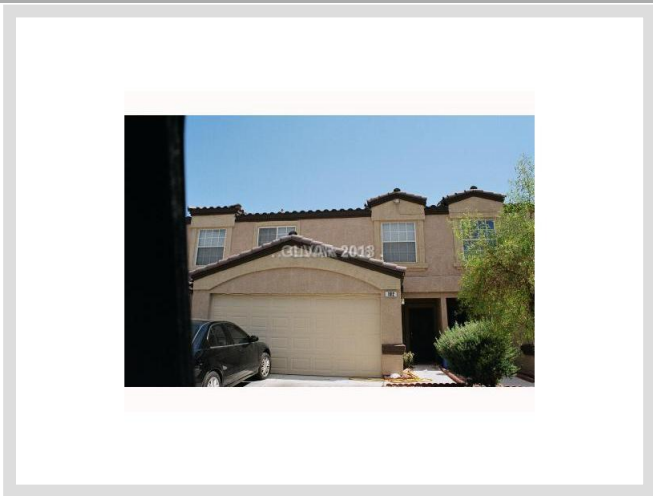




**2501 CHARLEVILLE AV #102** **MLS# 1310990**

<b>LEASED</b>
<b>\$750</b>
Leased on 01-21-2013
<b>Bedrooms 3</b>
<b>Bathrooms 3</b>
Full Baths 2
3/4 Baths 0
1/2 Baths 1
<b>Stories 2</b>
<b>Living Area 1,225 sq. ft.</b>
<b>Garages 2</b>
<b>Condominium Yes</b>
<b>Year Built 1999</b>
<b>List Date 01-03-2013</b>



**DESCRIPTION**

This 1,225 square foot single family home features 3 bedrooms and 3 bathrooms. It is located in Las Vegas on 2501 Charleville Av #102. The MLS number is 1310990 and the parcel number is 139-20-716-085. This listing became available on 01-03-2013 and was leased on 01-21-2013 for \$750. The full public address for this listing is 2501 Charleville Av #102, Las Vegas, Nevada 89106.

**THE DETAILS**

<b>Interior</b>	<b>Exterior</b>
<b>Flooring</b>	<b>Landscaping</b>
N/A	N/A
<b>Appliances</b>	<b>Pool No</b>
Dishwasher, Disposal, Washer, Dryer, Microwave	<b>Spa No</b>
<b>Fireplaces 0</b>	<b>Roof Description</b>
<b>Pets Allowed Yes</b>	Tile
<b>Interior Description</b>	
Blinds	
<b>Kitchen Description</b>	
Breakfast Bar/Counter, Breakfast Nook (Eating Area), Lighting Track, Linoleum/Vinyl Flooring	
<b>Master Bedroom Description</b>	
Master Bedroom Separate From Others, Master Bedroom Walk-In Closet	

## THE NEIGHBORHOOD

### Community

#### Community Name

N/A

#### Gated Yes

#### Features & Amenities

CCRs Restrictions, Community Clubhouse, Exercise Room, Gated Community, Playground/Park, Community Pool

### Schools

#### Elementary K-2

Detwiler Ollie

#### Elementary 3-5

Detwiler Ollie

#### Middle School

West Prep

#### High School

Western

### Nearby

#### Hospital

Valley Hospital Medical Center

3 miles - 11 minutes

#### Lake Mead

23.7 miles - 33 minutes

#### Las Vegas Strip

7.5 miles - 17 minutes

#### McCarran Airport

11.3 miles - 22 minutes

#### Mount Charleston

13.3 miles - 23 minutes

#### Red Rock

20 miles - 31 minutes

## THE NUMBERS

#### Current List Price

\$750

#### Previous List Price

N/A

#### Original List Price

\$750 on 01-03-2013

#### Price/Sq. Ft.

\$0.61

#### Short Sale No

#### Pre-Foreclosure No

#### Bank Owned No

#### Security Deposit \$750

#### Cleaning Deposit \$0

#### Admin. Deposit \$75

#### Key Deposit \$0

#### Pet Deposit \$250

#### Other Deposit \$0



Listing courtesy of Michelle Rock at Remax Extreme. The data relating to real estate for sale on this web site comes in part from the INTERNET DATA EXCHANGE Program of the Greater Las Vegas Association of REALTORS® MLS. Real estate listings held by brokerage firms other than this site owner are marked with the IDX logo. GLVAR deems information reliable but not guaranteed. Copyright 2019 of the Greater Las Vegas Association of REALTORS® MLS. All rights reserved.

For more photos or information on 2501 Charleville Av #102, please visit:

<https://vegasdata.com/home-search/details/2501-Charleville-Av-Unit-102-Las-Vegas-Nevada-89106/mls-1310990/>