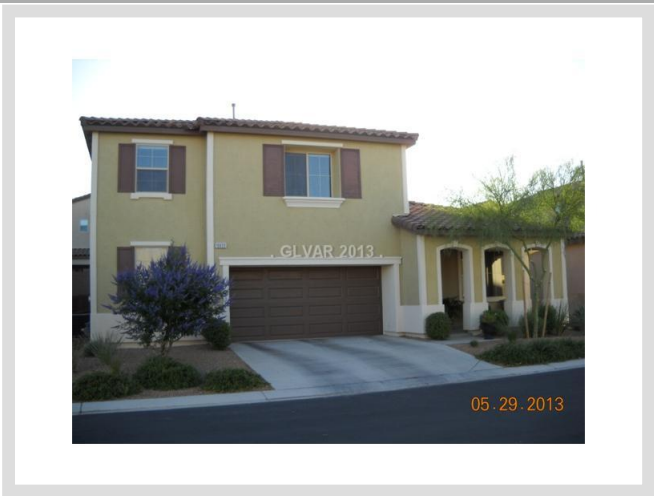




**10633 ENTRANCE ARCH STREET** **MLS# 1350420**

<b>SOLD</b>
<b>\$269,900</b>
Sold on 09-13-2013
<b>Bedrooms 4</b>
<b>Bathrooms 3</b>
Full Baths 3
3/4 Baths 0
1/2 Baths 0
<b>Stories 2</b>
<b>Living Area 2,694 sq. ft.</b>
<b>Lot Size 4,792 sq. ft.</b>
<b>Garages 2</b>
<b>Year Built 2010</b>
<b>List Date 05-29-2013</b>



**DESCRIPTION**

This 2,694 square foot single family home features 4 bedrooms, 3 bathrooms and is situated on a 4,792 square foot (0.11 acre) lot. It is located in the community of Mountains Edge in Las Vegas on 10633 Entrance Arch Street. The MLS number is 1350420 and the parcel number is 176-34-113-040. This listing became available on 05-29-2013 and was sold on 09-13-2013 for \$269,900. The full public address for this listing is 10633 Entrance Arch Street, Las Vegas, Nevada 89179.

**THE DETAILS**

<b>Interior</b>	<b>Exterior</b>
<b>Flooring</b>	<b>Landscaping</b>
Carpet, Carpeting Throughout, Ceramic	Desert Landscaping, Drip Irrigation/Bubblers, Mature Landscaping, Rock/Gravel Landscaping, Shrubs, Synthetic Grass
<b>Appliances</b>	<b>Pool No</b>
Refrigerator, Dishwasher, Disposal, Washer, Dryer	<b>Spa No</b>
<b>Fireplaces 0</b>	<b>House Faces East</b>
<b>Interior Description</b>	<b>Roof Description</b>
Ceiling Fan(s), Drywall, Windows Coverings Throughout	Pitched
<b>Kitchen Description</b>	<b>Utility Information</b>
N/A	Cable TV Wired, Underground Utilities
<b>Master Bedroom Description</b>	
N/A	

## THE NEIGHBORHOOD

### Community

#### Community Name

Mountains Edge

#### Gated No

#### Features & Amenities

CCRs, Not Age Restricted, Playground, Management, Recreation Facilities

### Schools

#### Elementary K-2

Reedom Carolyn Syr

#### Elementary 3-5

Reedom Carolyn Syr

#### Middle School

Tarkanian

#### High School

Desert Oasis

### Nearby

## THE NUMBERS

#### Current List Price

\$269,900

#### Previous List Price

\$277,000 on 05-29-2013

#### Original List Price

\$285,564 on 05-29-2013

#### Price/Sq. Ft.

\$100.19

#### Annual Taxes

\$2,645

#### Short Sale No

#### Pre-Foreclosure No

#### Bank Owned No

#### HOA Fees Yes

Master Plan Fee \$25/month

HOA #1 Fee \$30/month

#### SID/LID Fees Yes

SID/LID Balance \$5,583

SID/LID Annual Fee \$751



Listing courtesy of Terri Randall at Bhhs Nevada Properties. The data relating to real estate for sale on this web site comes in part from the INTERNET DATA EXCHANGE Program of the Greater Las Vegas Association of REALTORS® MLS. Real estate listings held by brokerage firms other than this site owner are marked with the IDX logo. GLVAR deems information reliable but not guaranteed. Copyright 2019 of the Greater Las Vegas Association of REALTORS® MLS. All rights reserved. For more photos or information on 10633 Entrance Arch Street, please visit: <https://vegasdata.com/home-search/details/10633-Entrance-Arch-Street-Las-Vegas-Nevada-89179/mls-1350420/>