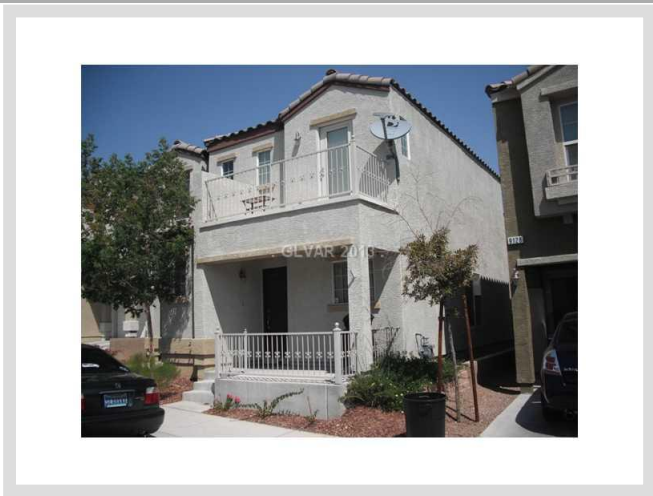




**9132 ENTRANCING AVENUE** **MLS# 1376101**

<b>SOLD</b>
<b>\$139,900</b>
Sold on 09-30-2013
<b>Bedrooms 3</b>
<b>Bathrooms 3</b>
Full Baths 2
3/4 Baths 0
1/2 Baths 1
<b>Stories 2</b>
<b>Living Area 1,298 sq. ft.</b>
<b>Lot Size 1,742 sq. ft.</b>
<b>Garages 1</b>
<b>Year Built 2005</b>
<b>List Date 08-22-2013</b>



**DESCRIPTION**

This 1,298 square foot single family home features 3 bedrooms, 3 bathrooms and is situated on a 1,742 square foot (0.04 acre) lot. It is located in the community of Town Center in Las Vegas on 9132 Entrancing Avenue. The MLS number is 1376101 and the parcel number is 125-17-310-340. This listing became available on 08-22-2013 and was sold on 09-30-2013 for \$139,900. The full public address for this listing is 9132 Entrancing Avenue, Las Vegas, Nevada 89149.

**THE DETAILS**

<b>Interior</b>	<b>Exterior</b>
<b>Flooring</b>	<b>Landscaping</b>
Carpet, Carpeting Throughout, Ceramic	Desert Landscaping
<b>Appliances</b>	<b>Pool No</b>
Refrigerator, Dishwasher, Disposal, Washer, Dryer	<b>Spa No</b>
<b>Fireplaces 0</b>	<b>House Faces South</b>
<b>Interior Description</b>	<b>Roof Description</b>
Blinds	Tile
<b>Kitchen Description</b>	<b>Utility Information</b>
N/A	Cable TV Wired, Underground Utilities
<b>Master Bedroom Description</b>	
N/A	

## THE NEIGHBORHOOD

### Community

#### Community Name

Town Center

#### Gated No

#### Features & Amenities

Basketball Courts, CCRs, COMMUNITY Pool, Not Age Restricted, Playground, Management, Recreation Facilities, Reserves

### Schools

#### Elementary K-2

Thompson Sandra Lee

#### Elementary 3-5

Thompson Sandra Lee

#### Middle School

Edmundo Eddie Escobedo

#### High School

Arbor View

### Nearby

#### Hospital

Centennial Hills Hospital

1.3 miles - 4 minutes

#### Lake Mead

35.8 miles - 42 minutes

#### Las Vegas Strip

20.1 miles - 25 minutes

#### McCarran Airport

23.2 miles - 30 minutes

#### Mount Charleston

3.7 miles - 8 minutes

#### Red Rock

17.9 miles - 29 minutes

## THE NUMBERS

#### Current List Price

\$139,900

#### Previous List Price

N/A

#### Original List Price

\$139,900 on 08-22-2013

#### Price/Sq. Ft.

\$107.78

#### Annual Taxes

\$766

#### Short Sale No

#### Pre-Foreclosure No

#### Bank Owned No

#### HOA Fees Yes

Master Plan Fee \$66/month



Listing courtesy of Shelley Brown at Bhhs Nevada Properties. The data relating to real estate for sale on this web site comes in part from the INTERNET DATA EXCHANGE Program of the Greater Las Vegas Association of REALTORS® MLS. Real estate listings held by brokerage firms other than this site owner are marked with the IDX logo. GLVAR deems information reliable but not guaranteed. Copyright 2019 of the Greater Las Vegas Association of REALTORS® MLS. All rights reserved. For more photos or information on 9132 Entrancing Avenue, please visit: <https://vegasdata.com/home-search/details/9132-Entrancing-Avenue-Las-Vegas-Nevada-89149/mls-1376101/>