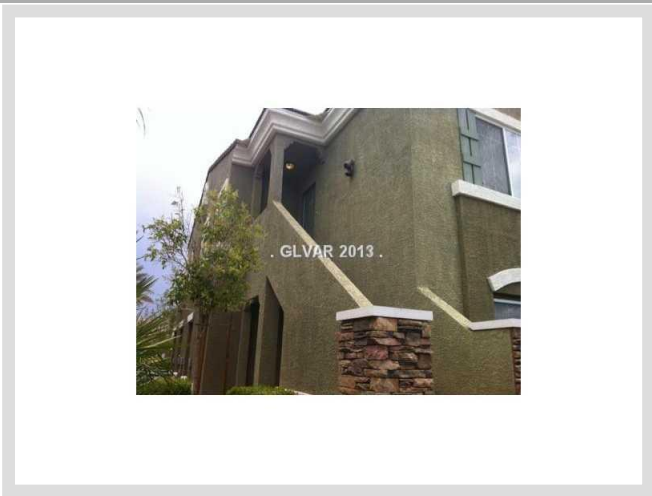




**9303 GILCREASE AVENUE #2246** **MLS# 1376877**

<b>SOLD</b>
<b>\$82,500</b>
Sold on 10-09-2013
<b>Bedrooms 2</b>
<b>Bathrooms 2</b>
Full Baths 2
3/4 Baths 0
1/2 Baths 0
<b>Stories 1</b>
<b>Living Area 1,121 sq. ft.</b>
<b>Garages 0</b>
<b>Condominium Yes</b>
<b>Year Built 2004</b>
<b>List Date 08-26-2013</b>



**DESCRIPTION**

This 1,121 square foot single family home features 2 bedrooms and 2 bathrooms. It is located in Las Vegas on 9303 Gilcrease Avenue #2246. The MLS number is 1376877 and the parcel number is 125-18-611-028. This listing became available on 08-26-2013 and was sold on 10-09-2013 for \$82,500. The full public address for this listing is 9303 Gilcrease Avenue #2246, Las Vegas, Nevada 89149.

**THE DETAILS**

<b>Interior</b>	<b>Exterior</b>
<b>Flooring</b> Carpet, Carpeting Throughout, Linoleum/Vinyl	<b>Landscaping</b> Mature Landscaping
<b>Appliances</b> Refrigerator, Dishwasher, Disposal, Washer, Dryer	<b>Pool No</b>
<b>Fireplaces 0</b>	<b>Spa No</b>
<b>Interior Description</b> Blinds, Ceiling Fan(s)	<b>House Faces East</b>
<b>Kitchen Description</b> N/A	<b>Roof Description</b> Tile
<b>Master Bedroom Description</b> N/A	<b>Utility Information</b> Underground Utilities

## THE NEIGHBORHOOD

### Community

#### Community Name

N/A

#### Gated Yes

#### Features & Amenities

Clubhouse, COMMUNITY Pool, Gated, Garbage Pickup, Sewer, Water

### Schools

#### Elementary K-2

Thompson Sandra Lee

#### Elementary 3-5

Thompson Sandra Lee

#### Middle School

Edmundo Eddie Escobedo

#### High School

Arbor View

### Nearby

#### Hospital

Centennial Hills Hospital

1.8 miles - 5 minutes

#### Lake Mead

36.4 miles - 41 minutes

#### Las Vegas Strip

20.7 miles - 24 minutes

#### McCarran Airport

23.7 miles - 28 minutes

#### Mount Charleston

3.6 miles - 6 minutes

#### Red Rock

17.8 miles - 26 minutes

## THE NUMBERS

#### Current List Price

\$82,500

#### Previous List Price

N/A

#### Original List Price

\$89,900 on 08-26-2013

#### Price/Sq. Ft.

\$73.60

#### Annual Taxes

\$533

#### Short Sale No

#### Pre-Foreclosure No

#### Bank Owned No

#### HOA Fees Yes

HOA #1 Fee \$161/month



Listing courtesy of Kendall Hanson at Remax Benchmark Realty. The data relating to real estate for sale on this web site comes in part from the INTERNET DATA EXCHANGE Program of the Greater Las Vegas Association of REALTORS® MLS. Real estate listings held by brokerage firms other than this site owner are marked with the IDX logo. GLVAR deems information reliable but not guaranteed. Copyright 2019 of the Greater Las Vegas Association of REALTORS® MLS. All rights reserved. For more photos or information on 9303 Gilcrease Avenue #2246, please visit: <https://vegasdata.com/home-search/details/9303-Gilcrease-Avenue-Unit-2246-Las-Vegas-Nevada-89149/mls-1376877/>