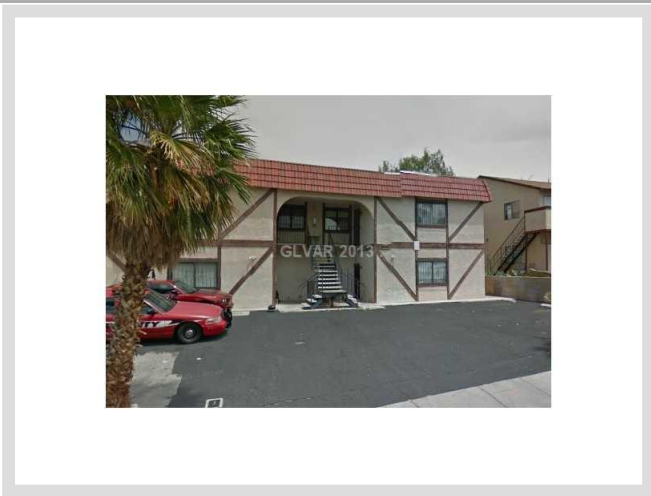




6936 KEPLER DRIVE **MLS# 1377241**

SOLD
\$195,000
Sold on 09-19-2013
Units Fourplex
Floors 2
Living Area 4,528 sq. ft.
Lot Size 7,405 sq. ft.
Parking Spaces 6
Year Built 1983
List Date 08-27-2013



DESCRIPTION

This 4,528 square foot multi-family home is situated on a 7,405 square foot (0.17 acre) lot. It is located in Las Vegas on 6936 Kepler Drive. The MLS number is 1377241 and the parcel number is 140-23-115-029. This listing became available on 08-27-2013 and was sold on 09-19-2013 for \$195,000. The full public address for this listing is 6936 Kepler Drive, Las Vegas, Nevada 89156.

THE DETAILS

Interior	Exterior
Flooring	Roof Description
Carpet, Carpeting Throughout	Composition Shingle
Appliances	Construction Description
Dishwasher, Refrigerator	Stucco
Property Amenities	
Blinds, Enclosed Yard(S)	

THE NUMBERS

Current List Price

\$195,000

Previous List Price

N/A

Original List Price

\$204,995 on 08-27-2013

Price/Sq. Ft.

\$43.07

Annual Taxes

\$1,181

Short Sale No**Pre-Foreclosure No****Bank Owned No**

HOA Fees No



Listing courtesy of Brendan Keating at Teg1 Inc. The data relating to real estate for sale on this web site comes in part from the INTERNET DATA EXCHANGE Program of the Greater Las Vegas Association of REALTORS® MLS. Real estate listings held by brokerage firms other than this site owner are marked with the IDX logo. GLVAR deems information reliable but not guaranteed. *Copyright 2019 of the Greater Las Vegas Association of REALTORS® MLS. All rights reserved.*
For more photos or information on 6936 Kepler Drive, please visit:
<https://vegasdata.com/home-search/details/6936-Kepler-Drive-Las-Vegas-Nevada-89156/mls-1377241/>