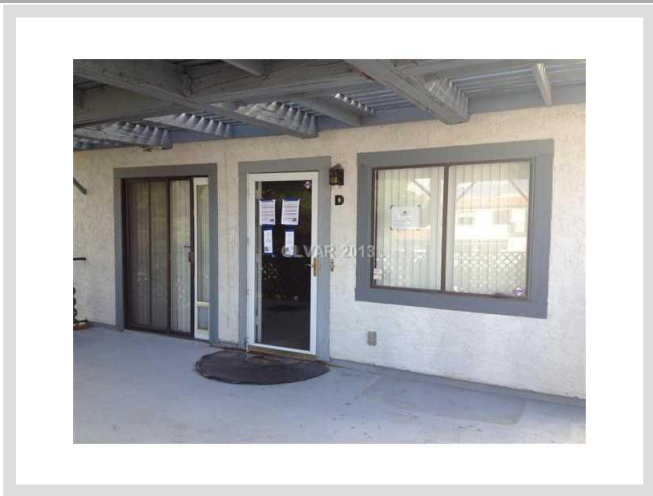




1028 WILLOW TREE DRIVE #D **MLS# 1380227**

SOLD
\$61,000
Sold on 12-31-2013
Bedrooms 2
Bathrooms 2
Full Baths 2
3/4 Baths 0
1/2 Baths 0
Stories 2
Living Area 924 sq. ft.
Garages 1
Condominium Yes
Year Built 1981
List Date 09-05-2013



DESCRIPTION

This 924 square foot single family home features 2 bedrooms and 2 bathrooms. It is located in Las Vegas on 1028 Willow Tree Drive #d. The MLS number is 1380227 and the parcel number is 138-27-612-040. This listing became available on 09-05-2013 and was sold on 12-31-2013 for \$61,000. The full public address for this listing is 1028 Willow Tree Drive #d, Las Vegas, Nevada 89128.

THE DETAILS

Interior	Exterior
Flooring Ceramic	Landscaping No Landscaping Front, No Landscaping Rear
Appliances N/A	Pool No
Fireplaces 0	Spa No
Interior Description Blinds	House Faces West
Kitchen Description N/A	Roof Description Shake
Master Bedroom Description N/A	Utility Information Underground Utilities

THE NEIGHBORHOOD

Community

Community Name

N/A

Gated No

Features & Amenities

CCRs, Tennis, Management, Recreation Facilities

Schools

Elementary K-2

Mc Millian James

Elementary 3-5

Mc Millian James

Middle School

Becker

High School

Cimarron Memorial

Nearby

Hospital

Mountain View Hospital

2.6 miles - 7 minutes

Lake Mead

26.7 miles - 32 minutes

Las Vegas Strip

11 miles - 16 minutes

McCarran Airport

14.1 miles - 20 minutes

Mount Charleston

13.1 miles - 14 minutes

Red Rock

14.3 miles - 21 minutes

THE NUMBERS

Current List Price

\$61,000

Previous List Price

N/A

Original List Price

\$60,000 on 09-05-2013

Price/Sq. Ft.

\$66.02

Annual Taxes

\$539

Short Sale No

Pre-Foreclosure No

Bank Owned Yes

HOA Fees Yes

Master Plan Fee \$160

HOA #1 Fee \$160/month



Listing courtesy of Brian Plaster at Signature Realty. The data relating to real estate for sale on this web site comes in part from the INTERNET DATA EXCHANGE Program of the Greater Las Vegas Association of REALTORS® MLS. Real estate listings held by brokerage firms other than this site owner are marked with the IDX logo. GLVAR deems information reliable but not guaranteed. Copyright 2019 of the Greater Las Vegas Association of REALTORS® MLS. All rights reserved.

For more photos or information on 1028 Willow Tree Drive #d, please visit:

<https://vegasdata.com/home-search/details/1028-Willow-Tree-Drive-Unit-D-Las-Vegas-Nevada-89128/mls-1380227/>