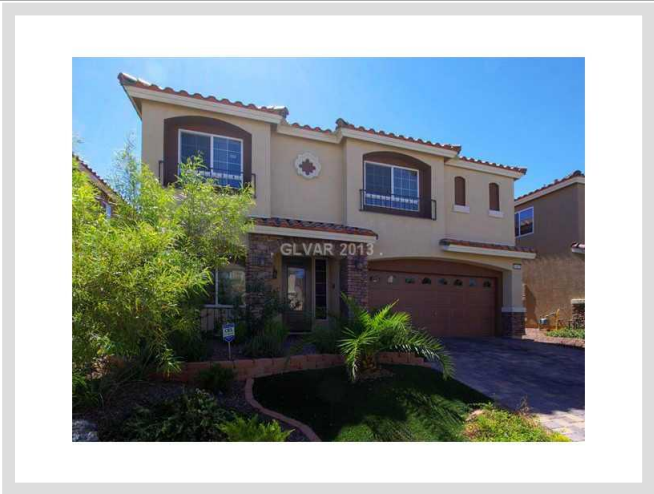




**6485 GRAND MAYNE COURT** **MLS# 1384518**

<b>SOLD</b>
<b>\$290,000</b>
Sold on 11-26-2014
<b>Bedrooms 5</b>
<b>Bathrooms 3</b>
Full Baths 2
3/4 Baths 0
1/2 Baths 1
<b>Stories 2</b>
<b>Living Area 2,742 sq. ft.</b>
<b>Lot Size 4,792 sq. ft.</b>
<b>Garages 2</b>
<b>Year Built 2011</b>
<b>List Date 09-18-2013</b>



**DESCRIPTION**

This 2,742 square foot single family home features 5 bedrooms, 3 bathrooms and is situated on a 4,792 square foot (0.11 acre) lot. It is located in the community of Coronado Ranch in Las Vegas on 6485 Grand Mayne Court. The MLS number is 1384518 and the parcel number is 176-14-616-218. This listing became available on 09-18-2013 and was sold on 11-26-2014 for \$290,000. The full public address for this listing is 6485 Grand Mayne Court, Las Vegas, Nevada 89139.

**THE DETAILS**

<b>Interior</b>	<b>Exterior</b>
<b>Flooring</b>	<b>Landscaping</b>
Carpet, Carpeting Throughout, Ceramic	Front Lawn, Rear Lawn, Sprinkler Timer
<b>Appliances</b>	<b>Pool No</b>
Refrigerator, Disposal, Washer, Dryer, Microwave	<b>Spa No</b>
<b>Fireplaces 1</b>	<b>House Faces South</b>
Location: Living Room	Views: City View, Mountain View
<b>Interior Description</b>	<b>Roof Description</b>
Blinds, Drywall, Intercom	Tile
<b>Kitchen Description</b>	<b>Utility Information</b>
N/A	Cable TV Wired, Cable Wired
<b>Master Bedroom Description</b>	<b>Green Certified Yes</b>
N/A	Certified in 2011 by ENERGY STAR

## THE NEIGHBORHOOD

### Community

#### Community Name

Coronado Ranch

#### Gated No

#### Features & Amenities

CCRs, Management

### Schools

#### Elementary K-2

Steele Judith

#### Elementary 3-5

Steele Judith

#### Middle School

Canarelli Lawrence & Heidi

#### High School

Sierra Vista High

### Nearby

#### Hospital

St. Rose Dominican Hospital - San Martín Campus

3.7 miles - 7 minutes

#### Lake Mead

24.8 miles - 30 minutes

#### Las Vegas Strip

9.5 miles - 15 minutes

#### McCarran Airport

9.7 miles - 14 minutes

#### Mount Charleston

23 miles - 31 minutes

#### Red Rock

18.8 miles - 26 minutes

## THE NUMBERS

#### Current List Price

\$290,000

#### Previous List Price

\$299,900 on 09-18-2013

#### Original List Price

\$311,000 on 09-18-2013

#### Price/Sq. Ft.

\$105.76

#### Annual Taxes

\$2,924

#### Short Sale Yes

#### Pre-Foreclosure No

#### Bank Owned No

#### HOA Fees Yes

Master Plan Fee \$36/quarter



Listing courtesy of Lathe Lavada at First Prime Realty Group. The data relating to real estate for sale on this web site comes in part from the INTERNET DATA EXCHANGE Program of the Greater Las Vegas Association of REALTORS® MLS. Real estate listings held by brokerage firms other than this site owner are marked with the IDX logo. GLVAR deems information reliable but not guaranteed. *Copyright 2019 of the Greater Las Vegas Association of REALTORS® MLS. All rights reserved.*

For more photos or information on 6485 Grand Mayne Court, please visit:

<https://vegasdata.com/home-search/details/6485-Grand-Mayne-Court-Las-Vegas-Nevada-89139/mls-1384518/>