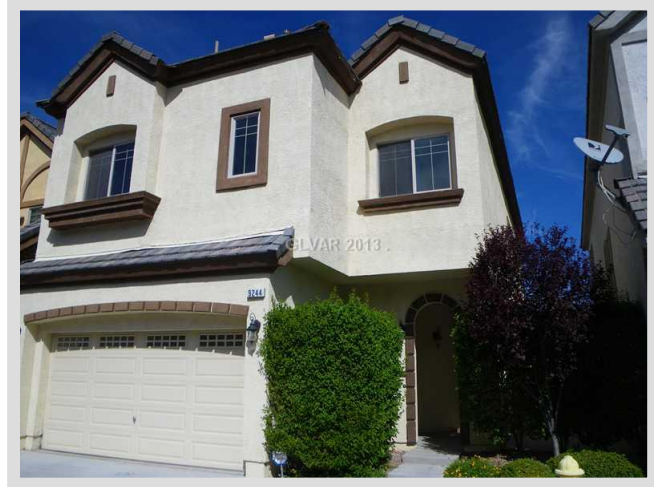




**WORSLEY PARK PLACE** **MLS# 1387902**

<b>LEASED</b>
<b>\$1,900</b>
Leased on 10-31-2013
<b>Bedrooms 3</b>
<b>Bathrooms 3</b>
Full Baths 2
3/4 Baths 0
1/2 Baths 1
<b>Stories 2</b>
<b>Living Area 2,816 sq. ft.</b>
<b>Garages 2</b>
<b>Year Built 2005</b>
<b>List Date 10-01-2013</b>



**DESCRIPTION**

This 2,816 square foot single family home features 3 bedrooms and 3 bathrooms. It is located in the community of Queensridge in Las Vegas on Worsley Park Place. The MLS number is 1387902 and the parcel number is 138-31-615-013. This listing became available on 10-01-2013 and was leased on 10-31-2013 for \$1,900. The full public address for this listing is Worsley Park Place, Las Vegas, Nevada 89145.

**THE DETAILS**

<b>Interior</b>	<b>Exterior</b>
<b>Flooring</b>	<b>Landscaping</b>
Carpet, Carpeting Throughout, Marble/Stone	N/A
<b>Appliances</b>	<b>Pool No</b>
Refrigerator, Dishwasher, Disposal, Microwave	<b>Spa Yes</b>
<b>Fireplaces 2</b>	<b>Roof Description</b>
<b>Pets Allowed No</b>	Tile
<b>Interior Description</b>	<b>Utility Information</b>
Alarm System-Owned, Blinds, Ceiling Fan(s), Intercom, Shutters, Windows Coverings Throughout	Cable TV Wired, Cat 5 Wired
<b>Kitchen Description</b>	
N/A	
<b>Master Bedroom Description</b>	
N/A	

## THE NEIGHBORHOOD

### Community

#### Community Name

Queensridge

#### Gated Yes

#### Features & Amenities

CCRs, Clubhouse, COMMUNITY Pool, COMMUNITY Spa, Gated

### Schools

#### Elementary K-2

Bonner John W

#### Elementary 3-5

Bonner John W

#### Middle School

Rogich Sig

#### High School

Palo Verde

### Nearby

## THE NUMBERS

#### Current List Price

\$1,900

#### Previous List Price

N/A

#### Original List Price

\$1,900 on 10-01-2013

#### Price/Sq. Ft.

\$0.67

#### Short Sale No

#### Pre-Foreclosure No

#### Bank Owned No

#### Security Deposit \$1,900

#### Cleaning Deposit \$150

#### Admin. Deposit \$50

#### Key Deposit \$50

#### Pet Deposit \$0

#### Other Deposit \$0



Listing courtesy of Gary Martin at Chm Realty. The data relating to real estate for sale on this web site comes in part from the INTERNET DATA EXCHANGE Program of the Greater Las Vegas Association of REALTORS® MLS. Real estate listings held by brokerage firms other than this site owner are marked with the IDX logo. GLVAR deems information reliable but not guaranteed. Copyright 2019 of the Greater Las Vegas Association of REALTORS® MLS. All rights reserved.

For more photos or information on Worsley Park Place, please visit:

<https://vegadata.com/home-search/details/Worsley-Park-Place-Las-Vegas-Nevada-89145/mls-1387902/>