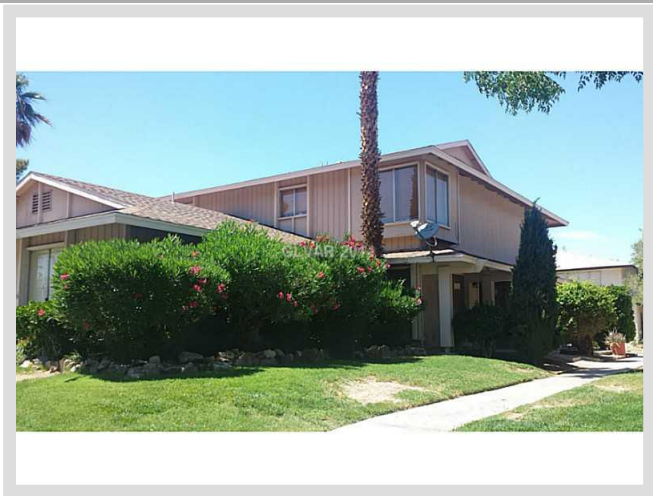




**1452 DOROTHY AVENUE #4** **MLS# 1453440**

<b>LEASED</b>
<b>\$695</b>
Leased on 06-19-2014
<b>Bedrooms 2</b>
<b>Bathrooms 1</b>
Full Baths 1
3/4 Baths 0
1/2 Baths 0
<b>Stories 2</b>
<b>Living Area 792 sq. ft.</b>
<b>Garages 0</b>
<b>Condominium Yes</b>
<b>Year Built 1972</b>
<b>List Date 06-10-2014</b>



**DESCRIPTION**

This 792 square foot single family home features 2 bedrooms and 1 bathrooms. It is located in Las Vegas on 1452 Dorothy Avenue #4. The MLS number is 1453440 and the parcel number is 162-23-413-044. This listing became available on 06-10-2014 and was leased on 06-19-2014 for \$695. The full public address for this listing is 1452 Dorothy Avenue #4, Las Vegas, Nevada 89119.

**THE DETAILS**

<b>Interior</b>	<b>Exterior</b>
<b>Flooring</b> Manmade wood or Laminate	<b>Landscaping</b> N/A
<b>Appliances</b> Refrigerator, Disposal, Washer, Dryer	<b>Pool No</b>
<b>Fireplaces 0</b>	<b>Spa No</b>
<b>Pets Allowed Yes</b>	<b>Roof Description</b> Composition Shingle
<b>Interior Description</b> Blinds	<b>Utility Information</b> Cable Wired
<b>Kitchen Description</b> N/A	
<b>Master Bedroom Description</b> N/A	

## THE NEIGHBORHOOD

### Community

#### Community Name

N/A

#### Gated No

#### Features & Amenities

Clubhouse, COMMUNITY Pool, Playground, Tennis

### Schools

#### Elementary K-2

Rowe Lewis

#### Elementary 3-5

Rowe Lewis

#### Middle School

Orr William E

#### High School

Del Sol Hs

### Nearby

#### Hospital

Desert Springs Hospital Medical Center

1.2 miles - 4 minutes

#### Lake Mead

15.9 miles - 24 minutes

#### Las Vegas Strip

3 miles - 8 minutes

#### McCarran Airport

2.2 miles - 6 minutes

#### Mount Charleston

25.8 miles - 30 minutes

#### Red Rock

24.8 miles - 33 minutes

## THE NUMBERS

#### Current List Price

\$695

#### Previous List Price

N/A

#### Original List Price

\$695 on 06-10-2014

#### Price/Sq. Ft.

\$0.88

#### Short Sale No

#### Pre-Foreclosure No

#### Bank Owned No

#### Security Deposit \$695

#### Cleaning Deposit \$250

#### Admin. Deposit \$50

#### Key Deposit \$0

#### Pet Deposit \$300

#### Other Deposit \$0



Listing courtesy of Stephen Bland at Keller Williams Southern Nevada. The data relating to real estate for sale on this web site comes in part from the INTERNET DATA EXCHANGE Program of the Greater Las Vegas Association of REALTORS® MLS. Real estate listings held by brokerage firms other than this site owner are marked with the IDX logo. GLVAR deems information reliable but not guaranteed. Copyright 2019 of the Greater Las Vegas Association of REALTORS® MLS. All rights reserved. For more photos or information on 1452 Dorothy Avenue #4, please visit: <https://vegasdata.com/home-search/details/1452-Dorothy-Avenue-Unit-4-Las-Vegas-Nevada-89119/mls-1453440/>