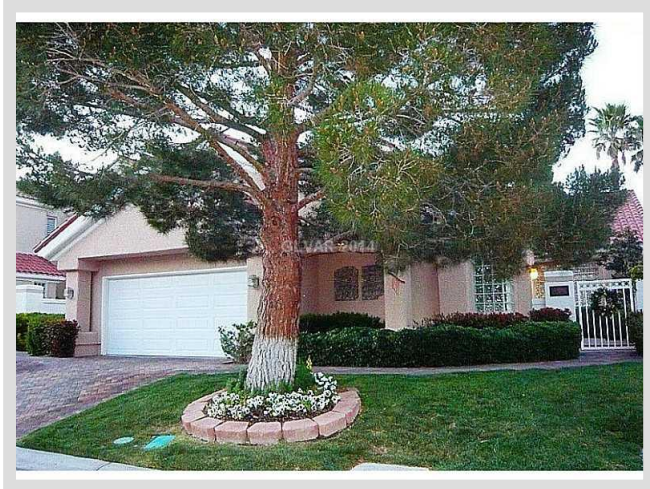




**8478 TURTLE CREEK CR** **MLS# 1453877**

<b>SOLD</b>
<b>\$650,770</b>
Sold on 06-13-2014
<b>Bedrooms 3</b>
<b>Bathrooms 4</b>
Full Baths 3
3/4 Baths 0
1/2 Baths 1
<b>Stories 2</b>
<b>Living Area 2,692 sq. ft.</b>
<b>Lot Size 7,405 sq. ft.</b>
<b>Garages 2</b>
<b>Year Built 1994</b>
<b>List Date 06-11-2014</b>



**DESCRIPTION**

This 2,692 square foot single family home features 3 bedrooms, 4 bathrooms and is situated on a 7,405 square foot (0.17 acre) lot. It is located in the community of Spanish Trail in Las Vegas on 8478 Turtle Creek Cr. The MLS number is 1453877 and the parcel number is 163-28-211-024. This listing became available on 06-11-2014 and was sold on 06-13-2014 for \$650,770. The full public address for this listing is 8478 Turtle Creek Cr, Las Vegas, Nevada 89113.

**THE DETAILS**

<b>Interior</b>	<b>Exterior</b>
<b>Flooring</b>	<b>Landscaping</b>
Carpet, Carpeting Throughout, Hardwood	Fountain, Front Sprinkler System, Mature Landscaping, Shrubs
<b>Appliances</b>	<b>Pool No</b>
Refrigerator, Dishwasher, Disposal, Washer, Dryer, Microwave, Wine Refrigerator	<b>Spa No</b>
<b>Fireplaces 2</b>	<b>House Faces South</b>
Location: Great Room, Master Bedroom	<b>Roof Description</b>
<b>Interior Description</b>	Pitched, Tile
Alarm System-Owned, Ceiling Fan(s), Drapes, Intercom	<b>Utility Information</b>
<b>Kitchen Description</b>	Cable TV Wired
N/A	
<b>Master Bedroom Description</b>	
N/A	

## THE NEIGHBORHOOD

### Community

#### Community Name

Spanish Trail

#### Gated Yes

#### Guard Gated Yes

#### Features & Amenities

CCRs, Exercise Room, Guard Gated, RV Restrictions, Tennis, Alarm System, Ground Maintenance, Recreation Facilities, Security(Couldinclude Gated/Guard Gated/Roving)

### Schools

#### Elementary K-2

Rogers Lucille S

#### Elementary 3-5

Rogers Lucille S

#### Middle School

Sawyer Grant

#### High School

Durango

### Nearby

#### Hospital

Southern Hills Hospital & Medical Center

4.2 miles - 9 minutes

#### Lake Mead

28 miles - 35 minutes

#### Las Vegas Strip

7.4 miles - 15 minutes

#### McCarran Airport

8.7 miles - 18 minutes

#### Mount Charleston

20.3 miles - 28 minutes

#### Red Rock

13.1 miles - 21 minutes

## THE NUMBERS

#### Current List Price

\$650,770

#### Previous List Price

N/A

#### Original List Price

\$698,000 on 06-11-2014

#### Price/Sq. Ft.

\$241.74

#### Annual Taxes

\$3,909

#### Short Sale No

#### Pre-Foreclosure No

#### Bank Owned No

#### HOA Fees Yes

Master Plan Fee \$240/month

HOA #1 Fee \$235/month



Listing courtesy of Susan Smith at Luxury Estates International. The data relating to real estate for sale on this web site comes in part from the INTERNET DATA EXCHANGE Program of the Greater Las Vegas Association of REALTORS® MLS. Real estate listings held by brokerage firms other than this site owner are marked with the IDX logo. GLVAR deems information reliable but not guaranteed. *Copyright 2019 of the Greater Las Vegas Association of REALTORS® MLS. All rights reserved.*

For more photos or information on 8478 Turtle Creek Cr, please visit:

<https://vegasdata.com/home-search/details/8478-Turtle-Creek-Cr-Las-Vegas-Nevada-89113/mls-1453877/>