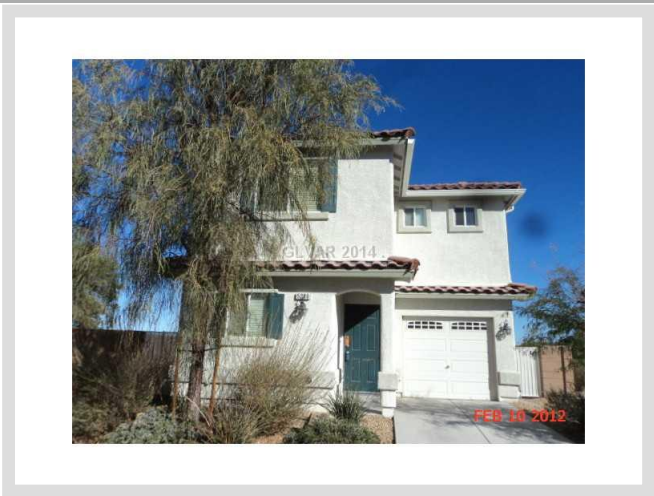




**5280 OPAL CREEK WAY** **MLS# 1502464**

<b>SOLD</b>	
<b>\$130,000</b>	
Sold on 01-27-2015	
<b>Bedrooms 3</b>	
<b>Bathrooms 3</b>	
Full Baths	2
3/4 Baths	1
1/2 Baths	0
<b>Stories 2</b>	
Living Area	1,552 sq. ft.
Lot Size	3,920 sq. ft.
<b>Garages 1</b>	
Year Built	2006
List Date	12-15-2014



**DESCRIPTION**

This 1,552 square foot single family home features 3 bedrooms, 3 bathrooms and is situated on a 3,920 square foot (0.09 acre) lot. It is located in the community of Stallion Mountain in Las Vegas on 5280 Opal Creek Way. The MLS number is 1502464 and the parcel number is 161-26-213-001. This listing became available on 12-15-2014 and was sold on 01-27-2015 for \$130,000. The full public address for this listing is 5280 Opal Creek Way, Las Vegas, Nevada 89122.

**THE DETAILS**

<b>Interior</b>	<b>Exterior</b>
<b>Flooring</b>	<b>Landscaping</b>
Carpet, Carpeting Throughout, Ceramic, Linoleum/Vinyl	Desert Landscaping, Drip Irrigation/Bubblers, Rock/Gravel Landscaping
<b>Appliances</b>	<b>Pool No</b>
Refrigerator, Dishwasher, Disposal, Washer, Dryer	<b>Spa No</b>
<b>Fireplaces 0</b>	<b>House Faces West</b>
<b>Interior Description</b>	<b>Roof Description</b>
Unfinished	Pitched, Tile
<b>Kitchen Description</b>	<b>Utility Information</b>
N/A	Underground Utilities
<b>Master Bedroom Description</b>	
N/A	

## THE NEIGHBORHOOD

### Community

#### Community Name

Stallion Mountain

#### Gated Yes

#### Features & Amenities

CCRs, Management

### Schools

#### Elementary K-2

Thorpe Jim

#### Elementary 3-5

Tarr Sheila

#### Middle School

Cram Brian & Teri

#### High School

Basic Tech Trade

### Nearby

#### Hospital

St. Rose Dominican Hospital - Rose de Lima Campus

4.9 miles - 9 minutes

#### Lake Mead

10.1 miles - 17 minutes

#### Las Vegas Strip

9 miles - 19 minutes

#### McCarran Airport

8.4 miles - 18 minutes

#### Mount Charleston

28.2 miles - 32 minutes

#### Red Rock

29.9 miles - 39 minutes

## THE NUMBERS

#### Current List Price

\$130,000

#### Previous List Price

N/A

#### Original List Price

\$135,000 on 12-15-2014

#### Price/Sq. Ft.

\$83.76

#### Annual Taxes

\$700

#### Short Sale No

#### Pre-Foreclosure No

#### Bank Owned No

#### HOA Fees Yes

HOA #1 Fee \$43/month



Listing courtesy of Duc Lu at 1st Priority Realty Llc. The data relating to real estate for sale on this web site comes in part from the INTERNET DATA EXCHANGE Program of the Greater Las Vegas Association of REALTORS® MLS. Real estate listings held by brokerage firms other than this site owner are marked with the IDX logo. GLVAR deems information reliable but not guaranteed. Copyright 2019 of the Greater Las Vegas Association of REALTORS® MLS. All rights reserved. For more photos or information on 5280 Opal Creek Way, please visit: <https://vegasdata.com/home-search/details/5280-Opal-Creek-Way-Las-Vegas-Nevada-89122/mls-1502464/>