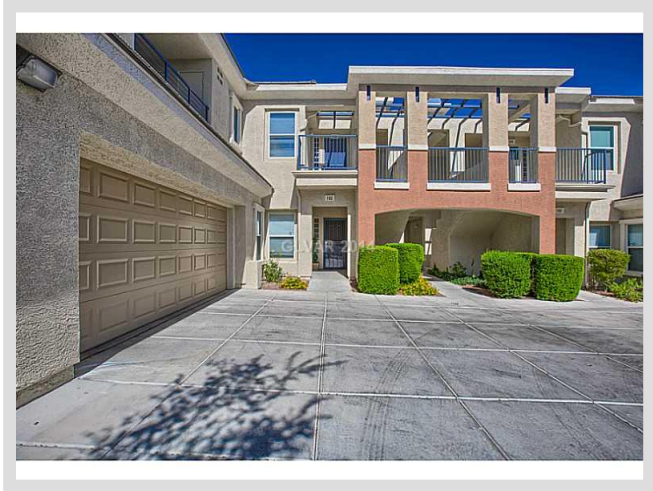




**820 GLACIER PEAK LANE #202** **MLS# 1503545**

<b>SOLD</b>
<b>\$230,000</b>
Sold on 03-23-2015
<b>Bedrooms 2</b>
<b>Bathrooms 2</b>
Full Baths 2
3/4 Baths 0
1/2 Baths 0
<b>Stories 2</b>
<b>Living Area 1,410 sq. ft.</b>
<b>Garages 2</b>
<b>Condominium Yes</b>
<b>Year Built 2001</b>
<b>List Date 12-21-2014</b>



**DESCRIPTION**

This 1,410 square foot single family home features 2 bedrooms and 2 bathrooms. It is located in the community of Summerlin in Las Vegas on 820 Glacier Peak Lane #202. The MLS number is 1503545 and the parcel number is 137-36-411-210. This listing became available on 12-21-2014 and was sold on 03-23-2015 for \$230,000. The full public address for this listing is 820 Glacier Peak Lane #202, Las Vegas, Nevada 89144.

**THE DETAILS**

<b>Interior</b>	<b>Exterior</b>
<b>Flooring</b>	<b>Landscaping</b>
Carpet, Carpeting Throughout, Ceramic	Mature Landscaping
<b>Appliances</b>	<b>Pool No</b>
Refrigerator, Dishwasher, Disposal, Washer, Dryer, Microwave	<b>Spa No</b>
<b>Fireplaces 0</b>	<b>House Faces South</b>
<b>Interior Description</b>	Views: Park/Greenbelt View
Alarm System-Wired, Blinds, Ceiling Fan(s), Windows Coverings Throughout	<b>Roof Description</b>
<b>Kitchen Description</b>	Tile
N/A	<b>Utility Information</b>
<b>Master Bedroom Description</b>	Cable Wired
N/A	

## THE NEIGHBORHOOD

### Community

#### Community Name

Summerlin

#### Gated Yes

#### Guard Gated Yes

#### Features & Amenities

CCRs, COMMUNITY Pool, COMMUNITY Spa, Exercise Room, Gated, Ground Maintenance, Security(Could include Gated/Guard Gated/Roving), Sewer

### Schools

#### Elementary K-2

Bonner John W

#### Elementary 3-5

Bonner John W

#### Middle School

Rogich Sig

#### High School

Palo Verde

### Nearby

#### Hospital

Summerlin Hospital Medical Center

2.1 miles - 5 minutes

#### Lake Mead

34.3 miles - 38 minutes

#### Las Vegas Strip

12.4 miles - 21 minutes

#### McCarran Airport

19.1 miles - 22 minutes

#### Mount Charleston

19 miles - 22 minutes

#### Red Rock

6.5 miles - 13 minutes

## THE NUMBERS

#### Current List Price

\$230,000

#### Previous List Price

\$247,500 on 12-21-2014

#### Original List Price

\$247,500 on 12-21-2014

#### Price/Sq. Ft.

\$163.12

#### Annual Taxes

\$1,390

#### Short Sale No

#### Pre-Foreclosure No

#### Bank Owned No

#### HOA Fees Yes

Master Plan Fee \$47/month

HOA #1 Fee \$163/month



Listing courtesy of Susan Smith at Luxury Estates International. The data relating to real estate for sale on this web site comes in part from the INTERNET DATA EXCHANGE Program of the Greater Las Vegas Association of REALTORS® MLS. Real estate listings held by brokerage firms other than this site owner are marked with the IDX logo. GLVAR deems information reliable but not guaranteed. *Copyright 2019 of the Greater Las Vegas Association of REALTORS® MLS. All rights reserved.*

For more photos or information on 820 Glacier Peak Lane #202, please visit:

<https://vegasdata.com/home-search/details/820-Glacier-Peak-Lane-Unit-202-Las-Vegas-Nevada-89144/mls-1503545/>