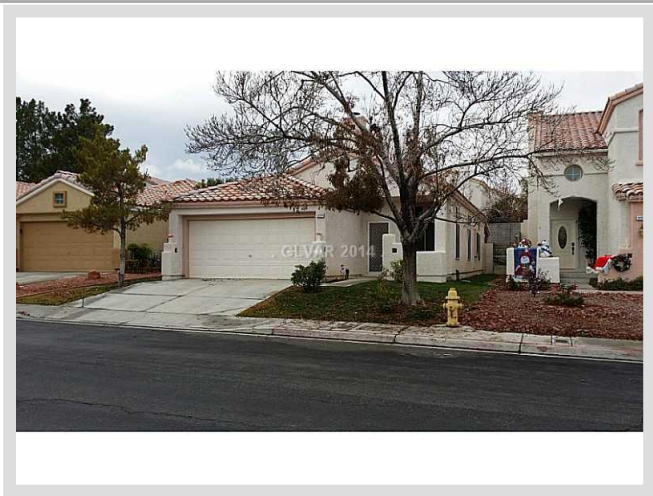




**2229 WHITE MIST DRIVE** **MLS# 1503724**

<b>SOLD</b>
<b>\$220,000</b>
Sold on 05-15-2015
<b>Bedrooms 3</b>
<b>Bathrooms 2</b>
Full Baths 1
3/4 Baths 1
1/2 Baths 0
<b>Stories 1</b>
<b>Living Area 1,378 sq. ft.</b>
<b>Lot Size 4,792 sq. ft.</b>
<b>Garages 2</b>
<b>Year Built 1991</b>
<b>List Date 12-23-2014</b>



**DESCRIPTION**

This 1,378 square foot single family home features 3 bedrooms, 2 bathrooms and is situated on a 4,792 square foot (0.11 acre) lot. It is located in the community of Summerlin Hills in Las Vegas on 2229 White Mist Drive. The MLS number is 1503724 and the parcel number is 138-19-515-126. This listing became available on 12-23-2014 and was sold on 05-15-2015 for \$220,000. The full public address for this listing is 2229 White Mist Drive, Las Vegas, Nevada 89134.

**THE DETAILS**

<b>Interior</b>	<b>Exterior</b>
<b>Flooring</b>	<b>Landscaping</b>
Carpet, Carpeting Throughout, Ceramic	Front Lawn, Mature Landscaping, Shrubs, Sprinkler Timer
<b>Appliances</b>	<b>Pool No</b>
Refrigerator, Dishwasher, Disposal, Washer, Dryer	<b>Spa No</b>
<b>Fireplaces 1</b>	<b>House Faces East</b>
Location: Living Room	<b>Roof Description</b>
<b>Interior Description</b>	Pitched, Tile
Blinds, Drywall, Pot Shelves, Windows Coverings Throughout	<b>Utility Information</b>
<b>Kitchen Description</b>	Cable TV Wired, Underground Utilities
N/A	
<b>Master Bedroom Description</b>	
N/A	

## THE NEIGHBORHOOD

### Community

#### Community Name

Summerlin Hills

#### Gated No

#### Features & Amenities

COMMUNITY Wall, Not Age Restricted, Management

### Schools

#### Elementary K-2

Lummis William

#### Elementary 3-5

Lummis William

#### Middle School

Becker

#### High School

Palo Verde

### Nearby

#### Hospital

Summerlin Hospital Medical Center

2.4 miles - 7 minutes

#### Lake Mead

31.1 miles - 37 minutes

#### Las Vegas Strip

15.4 miles - 21 minutes

#### McCarran Airport

18.4 miles - 25 minutes

#### Mount Charleston

17.7 miles - 21 minutes

#### Red Rock

11.4 miles - 19 minutes

## THE NUMBERS

#### Current List Price

\$220,000

#### Previous List Price

\$219,000 on 12-23-2014

#### Original List Price

\$225,000 on 12-23-2014

#### Price/Sq. Ft.

\$159.65

#### Annual Taxes

\$1,535

#### Short Sale No

#### Pre-Foreclosure No

#### Bank Owned No

#### HOA Fees Yes

Master Plan Fee \$47/month



Listing courtesy of Paul Peterson at Pacific International Realty. The data relating to real estate for sale on this web site comes in part from the INTERNET DATA EXCHANGE Program of the Greater Las Vegas Association of REALTORS® MLS. Real estate listings held by brokerage firms other than this site owner are marked with the IDX logo. GLVAR deems information reliable but not guaranteed. Copyright 2019 of the Greater Las Vegas Association of REALTORS® MLS. All rights reserved.

For more photos or information on 2229 White Mist Drive, please visit:

<https://vegasdata.com/home-search/details/2229-White-Mist-Drive-Las-Vegas-Nevada-89134/mls-1503724/>