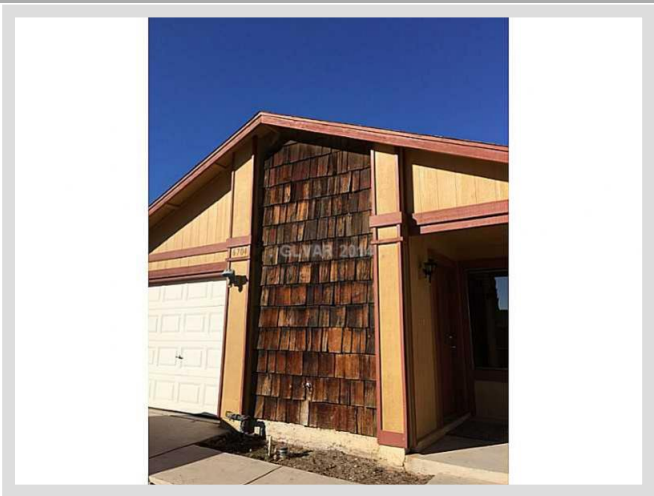




**6704 SHEFFIELD DRIVE** **MLS# 1504461**

<b>SOLD</b>
<b>\$113,000</b>
Sold on 02-04-2015
<b>Bedrooms 2</b>
<b>Bathrooms 2</b>
Full Baths 1
3/4 Baths 1
1/2 Baths 0
<b>Stories 1</b>
<b>Living Area 1,036 sq. ft.</b>
<b>Lot Size 3,485 sq. ft.</b>
<b>Garages 1</b>
<b>Year Built 1984</b>
<b>List Date 12-29-2014</b>



**DESCRIPTION**

This 1,036 square foot single family home features 2 bedrooms, 2 bathrooms and is situated on a 3,485 square foot (0.08 acre) lot. It is located in Las Vegas on 6704 Sheffield Drive. The MLS number is 1504461 and the parcel number is 138-03-710-033. This listing became available on 12-29-2014 and was sold on 02-04-2015 for \$113,000. The full public address for this listing is 6704 Sheffield Drive, Las Vegas, Nevada 89108.

**THE DETAILS**

<b>Interior</b>	<b>Exterior</b>
<b>Flooring</b>	<b>Landscaping</b>
Carpet, Carpeting Throughout, Linoleum/Vinyl	Desert Landscaping, Drip Irrigation/Bubblers
<b>Appliances</b>	<b>Pool No</b>
Refrigerator, Dishwasher, Microwave, Water Conditioner-Owned	<b>Spa No</b>
<b>Fireplaces 1</b>	<b>House Faces South</b>
Location: Living Room	Views: None
<b>Interior Description</b>	<b>Roof Description</b>
Blinds, Drywall, Window Coverings Partial	Composition Shingle, Pitched
<b>Kitchen Description</b>	<b>Utility Information</b>
N/A	Cable TV Wired
<b>Master Bedroom Description</b>	
N/A	

## THE NEIGHBORHOOD

### Community

#### Community Name

N/A

#### Gated No

#### Features & Amenities

None

### Schools

#### Elementary K-2

Deskin Ruthe

#### Elementary 3-5

Deskin Ruthe

#### Middle School

Leavitt Justice Myron E

#### High School

Centennial

### Nearby

#### Hospital

Mountain View Hospital

2.2 miles - 5 minutes

#### Lake Mead

30.8 miles - 35 minutes

#### Las Vegas Strip

15.1 miles - 19 minutes

#### McCarran Airport

18.2 miles - 23 minutes

#### Mount Charleston

8.5 miles - 10 minutes

#### Red Rock

17 miles - 26 minutes

## THE NUMBERS

#### Current List Price

\$113,000

#### Previous List Price

N/A

#### Original List Price

\$115,000 on 12-29-2014

#### Price/Sq. Ft.

\$109.07

#### Annual Taxes

\$566

#### Short Sale No

#### Pre-Foreclosure No

#### Bank Owned No

#### HOA Fees No



Listing courtesy of Rhonda Lindenbaum at Keller Williams Market Place I. The data relating to real estate for sale on this web site comes in part from the INTERNET DATA EXCHANGE Program of the Greater Las Vegas Association of REALTORS® MLS. Real estate listings held by brokerage firms other than this site owner are marked with the IDX logo. GLVAR deems information reliable but not guaranteed. Copyright 2019 of the Greater Las Vegas Association of REALTORS® MLS. All rights reserved. For more photos or information on 6704 Sheffield Drive, please visit: <https://vegasdata.com/home-search/details/6704-Sheffield-Drive-Las-Vegas-Nevada-89108/mls-1504461/>