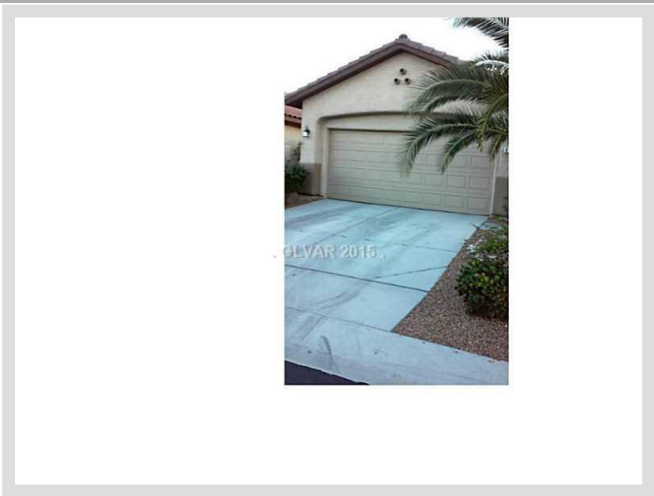




**6141 WHEAT PENNY AVENUE** **MLS# 1582356**

<b>SOLD</b>
<b>\$182,000</b>
Sold on 03-30-2016
<b>Bedrooms 3</b>
<b>Bathrooms 2</b>
Full Baths 2
3/4 Baths 0
1/2 Baths 0
<b>Stories 1</b>
<b>Living Area 1,234 sq. ft.</b>
<b>Lot Size 4,356 sq. ft.</b>
<b>Garages 2</b>
<b>Year Built 2006</b>
<b>List Date 10-20-2015</b>



**DESCRIPTION**

This 1,234 square foot single family home features 3 bedrooms, 2 bathrooms and is situated on a 4,356 square foot (0.10 acre) lot. It is located in the community of Stallion Mountain in Las Vegas on 6141 Wheat Penny Avenue. The MLS number is 1582356 and the parcel number is 161-15-310-016. This listing became available on 10-20-2015 and was sold on 03-30-2016 for \$182,000. The full public address for this listing is 6141 Wheat Penny Avenue, Las Vegas, Nevada 89122.

**THE DETAILS**

<b>Interior</b>	<b>Exterior</b>
<b>Flooring</b>	<b>Landscaping</b>
Ceramic, Manmade wood or Laminate	Desert Landscaping, Front Sprinkler System
<b>Appliances</b>	<b>Pool No</b>
Refrigerator, Dishwasher, Disposal, Washer, Dryer, Microwave	<b>Spa No</b>
<b>Fireplaces 0</b>	<b>House Faces East</b>
<b>Interior Description</b>	<b>Roof Description</b>
Blinds, Ceiling Fan(s), Windows Coverings Throughout	Tile
<b>Kitchen Description</b>	<b>Utility Information</b>
Breakfast Bar/Counter, Custom Cabinets, Granite Countertops, Pantry, Tile Flooring	All Electric, Underground Utilities
<b>Master Bedroom Description</b>	
N/A	

## THE NEIGHBORHOOD

### Community

#### Community Name

Stallion Mountain

#### Age Restricted Yes

Gated Yes

#### Guard Gated Yes

#### Features & Amenities

Age Restricted, CCRs, Clubhouse, COMMUNITY Pool, Gated, Security, Management, Security(Couldinclude Gated/Guard Gated/Roving)

### Schools

#### Elementary K-2

Cunningham Cynthia

#### Elementary 3-5

Cunnngham

#### Middle School

Harney Kathleen & Tim

#### High School

Chaparral

### Nearby

## THE NUMBERS

#### Current List Price

\$182,000

#### Previous List Price

\$189,000 on 10-20-2015

#### Original List Price

\$189,000 on 10-20-2015

#### Price/Sq. Ft.

\$147.49

#### Annual Taxes

\$1,092

#### Short Sale No

#### Pre-Foreclosure No

#### Bank Owned No

#### HOA Fees Yes

HOA #1 Fee \$100/month



Listing courtesy of Parmendra Prasad at At Your Service Realty. The data relating to real estate for sale on this web site comes in part from the INTERNET DATA EXCHANGE Program of the Greater Las Vegas Association of REALTORS® MLS. Real estate listings held by brokerage firms other than this site owner are marked with the IDX logo. GLVAR deems information reliable but not guaranteed. Copyright 2019 of the Greater Las Vegas Association of REALTORS® MLS. All rights reserved. For more photos or information on 6141 Wheat Penny Avenue, please visit: <https://vegasdata.com/home-search/details/6141-Wheat-Penny-Avenue-Las-Vegas-Nevada-89122/mls-1582356/>