



11495 MORNING GROVE DRIVE **MLS# 1583228**

SOLD
\$1,410,000
Sold on 02-26-2016

Bedrooms 5

Bathrooms 5
Full Baths 2
3/4 Baths 2
1/2 Baths 1

Stories 2

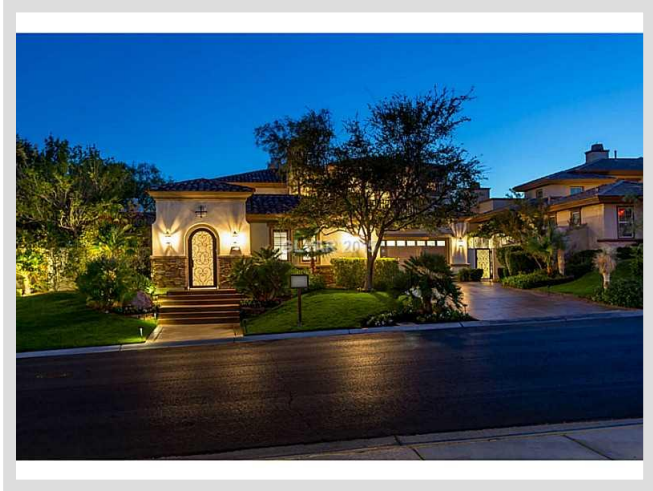
Living Area 4,725 sq. ft.

Lot Size 13,939 sq. ft.

Garages 4

Year Built 2000

List Date 10-23-2015



DESCRIPTION

This 4,725 square foot single family home features 5 bedrooms, 5 bathrooms and is situated on a 13,939 square foot (0.32 acre) lot. It is located in the community of Red Rock Country Club in Las Vegas on 11495 Morning Grove Drive. The MLS number is 1583228 and the parcel number is 164-02-314-006. This listing became available on 10-23-2015 and was sold on 02-26-2016 for \$1,410,000. The full public address for this listing is 11495 Morning Grove Drive, Las Vegas, Nevada 89135.

THE DETAILS

Interior	Exterior
Flooring	Landscaping
Carpet, Carpeting Throughout, Hardwood, Marble/Stone	Drip Irrigation/Bubblers, Front Lawn, Front Sprinkler System, Mature Landscaping, Rear Lawn, Rear Sprinkler System, Shrubs, Side(s)Sprinkler System
Appliances	Pool Yes
Refrigerator, Dishwasher, Disposal, Washer, Dryer, Wine Refrigerator	Spa Yes
Fireplaces 3	House Faces North
Location: Family Room, Living Room, Master Bedroom	Views: Golf Course View, Mountain View, Strip View
Interior Description	Roof Description
Alarm System-Owned, Blinds, Ceiling Fan(s), Shutters, Windows Coverings Throughout	Pitched, Tile
Kitchen Description	Utility Information
Breakfast Nook/Eating Area, Custom Cabinets, Garden Window, Granite Countertops, Island, Marble/Stone Flooring	Cable TV Wired, Underground Utilities
Master Bedroom Description	
N/A	

THE NEIGHBORHOOD

Community

Community Name

Red Rock Country Club

Gated Yes**Guard Gated Yes****Features & Amenities**

CCRs, Clubhouse, Country Club, COMMUNITY Golf, Exercise Room, Gated, Guard Gated, Management, Recreation Facilities, Security(Couldinclude Gated/Guard Gated/Roving)

Schools

Elementary K-2

Goolsby Judy & John

Elementary 3-5

Goolsby Judy & John

Middle School

Fertitta Frank & Victoria

High School

Palo Verde

Nearby

Hospital

Summerlin Hospital Medical Center

4.6 miles - 11 minutes

Lake Mead

33.3 miles - 37 minutes

Las Vegas Strip

17.9 miles - 22 minutes

McCarran Airport

16.7 miles - 18 minutes

Mount Charleston

38.5 miles - 43 minutes

Red Rock

5.9 miles - 13 minutes

THE NUMBERS

Current List Price

\$1,410,000

Previous List Price

N/A

Original List Price

\$1,450,000 on 10-23-2015

Price/Sq. Ft.

\$298.41

Annual Taxes

\$6,155

Short Sale No**Pre-Foreclosure No****Bank Owned No****HOA Fees Yes**

HOA #1 Fee \$245/month



Listing courtesy of Jana Shore at Bhhs Nevada Properties. The data relating to real estate for sale on this web site comes in part from the INTERNET DATA EXCHANGE Program of the Greater Las Vegas Association of REALTORS® MLS. Real estate listings held by brokerage firms other than this site owner are marked with the IDX logo. GLVAR deems information reliable but not guaranteed. Copyright 2019 of the Greater Las Vegas Association of REALTORS® MLS. All rights reserved.

For more photos or information on 11495 Morning Grove Drive, please visit:

<https://vegasdata.com/home-search/details/11495-Morning-Grove-Drive-Las-Vegas-Nevada-89135/mls-1583228/>