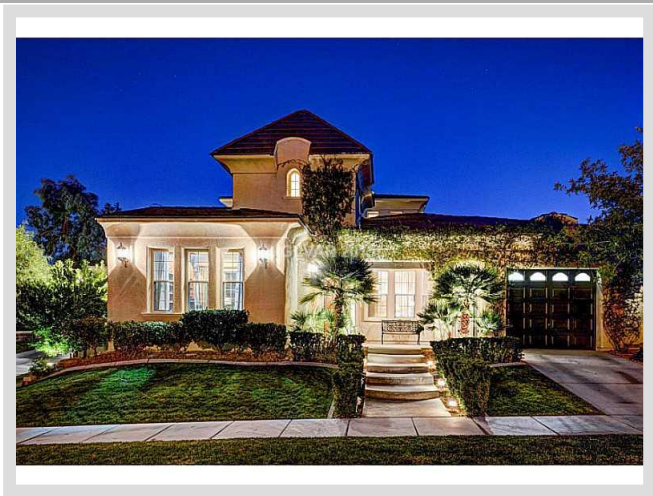




**10713 BERINGER DRIVE** **MLS# 1589117**

<b>SOLD</b>
<b>\$690,000</b>
Sold on 08-19-2016
<b>Bedrooms 4</b>
<b>Bathrooms 4</b>
Full Baths 3
3/4 Baths 0
1/2 Baths 1
<b>Stories 2</b>
<b>Living Area 3,434 sq. ft.</b>
<b>Lot Size 11,761 sq. ft.</b>
<b>Garages 3</b>
<b>Year Built 2003</b>
<b>List Date 11-17-2015</b>



**DESCRIPTION**

This 3,434 square foot single family home features 4 bedrooms, 4 bathrooms and is situated on a 11,761 square foot (0.27 acre) lot. It is located in the community of Summerlin Hills in Las Vegas on 10713 Beringer Drive. The MLS number is 1589117 and the parcel number is 137-25-118-030. This listing became available on 11-17-2015 and was sold on 08-19-2016 for \$690,000. The full public address for this listing is 10713 Beringer Drive, Las Vegas, Nevada 89144.

**THE DETAILS**

<b>Interior</b>	<b>Exterior</b>
<b>Flooring</b>	<b>Landscaping</b>
Carpet, Carpeting Throughout, Marble/Stone	Front Lawn, Front Sprinkler System, Mature Landscaping, Rear Lawn, Rear Sprinkler System
<b>Appliances</b>	<b>Pool Yes</b>
Dishwasher, Disposal, Microwave	<b>Spa Yes</b>
<b>Fireplaces 1</b>	<b>House Faces North</b>
Location: Family Room	<b>Roof Description</b>
<b>Interior Description</b>	Tile
Alarm System-Owned, Blinds, Ceiling Fan(s), Pot Shelves, Windows Coverings Throughout	<b>Utility Information</b>
<b>Kitchen Description</b>	Underground Utilities
Breakfast Bar/Counter, Granite Countertops, Island, Lighting Recessed, Tile Flooring	
<b>Master Bedroom Description</b>	
N/A	

## THE NEIGHBORHOOD

### Community

#### Community Name

Summerlin Hills

#### Gated Yes

#### Guard Gated Yes

#### Features & Amenities

CCRs, Guard Gated, Jogging, Playground, Ground Maintenance, Management, Security(Couldinclude Gated/Guard Gated/Roving)

### Schools

#### Elementary K-2

Staton Ethel W

#### Elementary 3-5

Stanton Ethel

#### Middle School

Rogich Sig

#### High School

Palo Verde

### Nearby

#### Hospital

Summerlin Hospital Medical Center

1.5 miles - 4 minutes

#### Lake Mead

33.8 miles - 39 minutes

#### Las Vegas Strip

15.9 miles - 21 minutes

#### McCarran Airport

19.4 miles - 20 minutes

#### Mount Charleston

34.1 miles - 38 minutes

#### Red Rock

8.2 miles - 16 minutes

## THE NUMBERS

#### Current List Price

\$690,000

#### Previous List Price

\$760,000 on 11-17-2015

#### Original List Price

\$760,000 on 11-17-2015

#### Price/Sq. Ft.

\$200.93

#### Annual Taxes

\$5,433

#### NOD Date

10-21-2015

#### Short Sale Yes

#### Pre-Foreclosure Yes

#### Bank Owned No

#### HOA Fees Yes

#### Master Plan Fee \$47/month

#### HOA #1 Fee \$252/month

#### SID/LID Fees Yes

#### SID/LID Balance \$135

#### SID/LID Annual Fee \$569



Listing courtesy of Sergio Colombo at Terraferma Real Estate. The data relating to real estate for sale on this web site comes in part from the INTERNET DATA EXCHANGE Program of the Greater Las Vegas Association of REALTORS® MLS. Real estate listings held by brokerage firms other than this site owner are marked with the IDX logo. GLVAR deems information reliable but not guaranteed. Copyright 2019 of the Greater Las Vegas Association of REALTORS® MLS. All rights reserved.

For more photos or information on 10713 Beringer Drive, please visit:

<https://vegasdata.com/home-search/details/10713-Beringer-Drive-Las-Vegas-Nevada-89144/mls-1589117/>