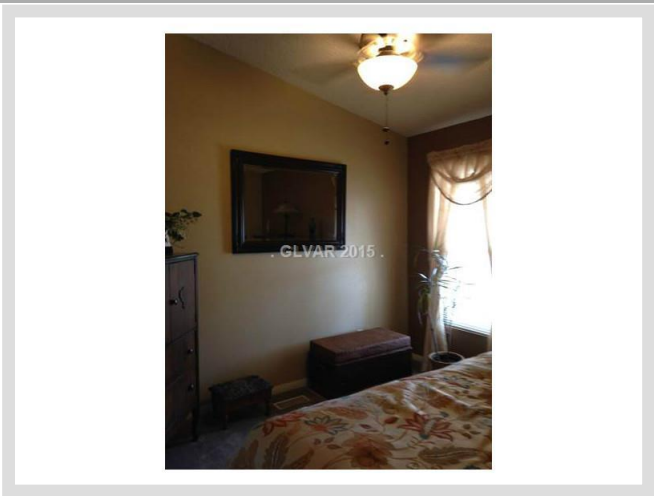




2320 W SCHIFRIN STREET **MLS# 1584579**

SOLD
\$107,500
Sold on 05-15-2017
Bedrooms 2
Bathrooms 2
Full Baths 2
3/4 Baths 0
1/2 Baths 0
Living Area 1,678 sq. ft.
Lot Size 21,336 sq. ft.
Garages 2
Manufactured Yes
Year Built 1997
List Date 10-26-2015



DESCRIPTION

This 1,678 square foot single family home features 2 bedrooms, 2 bathrooms and is situated on a 21,336 square foot (0.49 acre) lot. It is located in Pahrump on 2320 W Schifrin Street. The MLS number is 1584579 and the parcel number is 36-543-15. This listing became available on 10-26-2015 and was sold on 05-15-2017 for \$107,500. The full public address for this listing is 2320 W Schifrin Street, Pahrump, Nevada 89048.

THE DETAILS

Interior	Exterior
Flooring	Landscaping
Carpet, Carpeting Throughout, Linoleum/Vinyl	Desert Landscaping, Mature Landscaping, Shrubs
Appliances	Pool No
Refrigerator, Dishwasher, Disposal	Spa No
Fireplaces 1	House Faces South
Location: Living Room	Roof Description
Interior Description	Tile
Drywall	Utility Information
Kitchen Description	All Electric
Breakfast Nook/Eating Area, Garden Window, Island, Pantry	
Master Bedroom Description	
N/A	

THE NEIGHBORHOOD

Community

Community Name

N/A

Gated No

Features & Amenities

None, Water

Schools

Elementary K-2

J G Johnson

Elementary 3-5

Johnson Jg

Middle School

Rosemary Clarke

High School

Pahrump Valley

Nearby

Hospital

Desert View Hospital

3.1 miles - 6 minutes

Lake Mead

78 miles - 88 minutes

Las Vegas Strip

62.4 miles - 71 minutes

McCarran Airport

61.4 miles - 68 minutes

Mount Charleston

85.1 miles - 81 minutes

Red Rock

56.7 miles - 64 minutes

THE NUMBERS

Current List Price

\$107,500

Previous List Price

\$98,900 on 10-26-2015

Original List Price

\$139,900 on 10-26-2015

Price/Sq. Ft.

\$64.06

Annual Taxes

\$774

Short Sale Yes

Pre-Foreclosure No

Bank Owned No

HOA Fees Yes

Master Plan Fee \$35/year



Listing courtesy of Steve Hawks at Platinum Re Professionals. The data relating to real estate for sale on this web site comes in part from the INTERNET DATA EXCHANGE Program of the Greater Las Vegas Association of REALTORS® MLS. Real estate listings held by brokerage firms other than this site owner are marked with the IDX logo. GLVAR deems information reliable but not guaranteed. Copyright 2019 of the Greater Las Vegas Association of REALTORS® MLS. All rights reserved.

For more photos or information on 2320 W Schifrin Street, please visit:

<https://vegasdata.com/home-search/details/2320-W-Schifrin-Street-Pahrump-Nevada-89048/mls-1584579/>